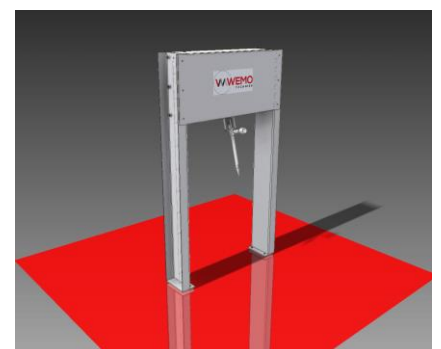
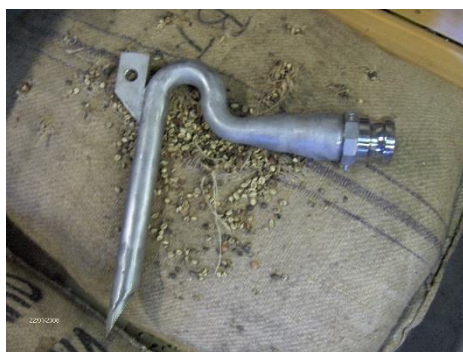
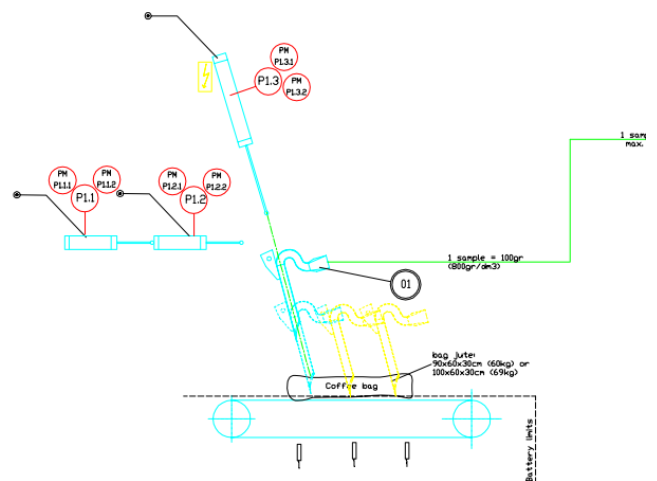
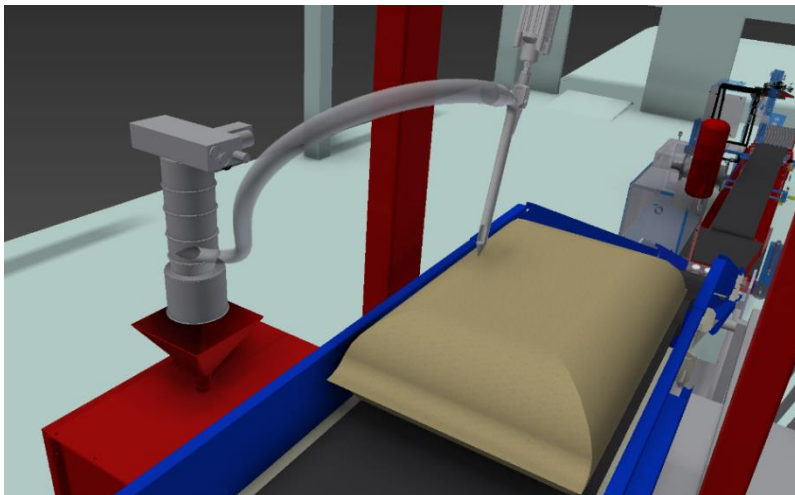


Dedicated sampling system for jute/sackcloth bagged goods e.g. coffee beans, cacao beans.

A special designed needle shaped tube is pushed (by pneumatic cylinder) into the bag when passing over a band conveyor. The sample is transported with a pneumatic airflow to a receiver.



TECHNICAL DATA

3 different positions of needle (random)	Sample volume 100-200 gr.	Position monitoring	Material Steel or SS
Pneumatic cylinders for movement	Special designed needle made of Stainless Steel	Air consumption 15NL/s	Random or every bag